

PISTON ACTUATED VALVE(PAV-30)

TECHNICAL INFORMATION SHEET

STAINLESS STEEL

CLASS / RATING : #150| SIZE : 15 NB TO 50 NB



DESCRIPTION

VOLFRAM PISTON ACTUATED VALVE USE AIR OR INERT GAS TO PILOT THE ACTUATOR, WHERE A PISTON IS DIRECTLY CONNECTED TO THE MAIN SEAL THAT CLOSES OVER THE MAIN ORIFICE, THEREBY CONTROLLING THE FLOW OF LIQUIDS AND GASES AS PER REQUIREMENT

SIZES & CLASS / RATINGS

1. AVAILABLE SIZES : 15, 20, 25, 40, 50NB.
2. AVAILABLE CLASS / RATING : #150

SPECIFICATION

1. MEDIA : STEAM, CORROSIVE LIQUID, INERT GASES AND LIGHT SLURRY MATERIAL
2. END CONNECTION : SCREWED / BSP
3. PILOT MEDIA : AIR, INERT GASES
4. PILOT MEDIA PRESSURE : 150 psi(0.06 bar) MAX
5. SEATING : SOFT SEATED TEFLON BACKED BY EPDM
6. WORKING TEMPERATURE : FOR STEAM 155°C, FOR OTHER MEDIAS 180°C SUBJECTED TO THE SEATING MATERIAL



PISTON ACTUATED VALVE

BILL OF MATERIAL

Sr.NO	ITEM DESCRIPTION	MATERIAL
1	BODY AND AND BONNET	A351 CF8
2	CYLINDER COVER	SS 304
3	CYLINDER FLANGE	ALUMINIUM SILICON ALLOY
4	PISTON	STEEL(DEEP DRAWN)
5	ACTUATOR SPRING	IS 4454 Gr. III
6	SEATING	TEFLON/EPDM/VITON
7	SEALS	PTFE/VITON

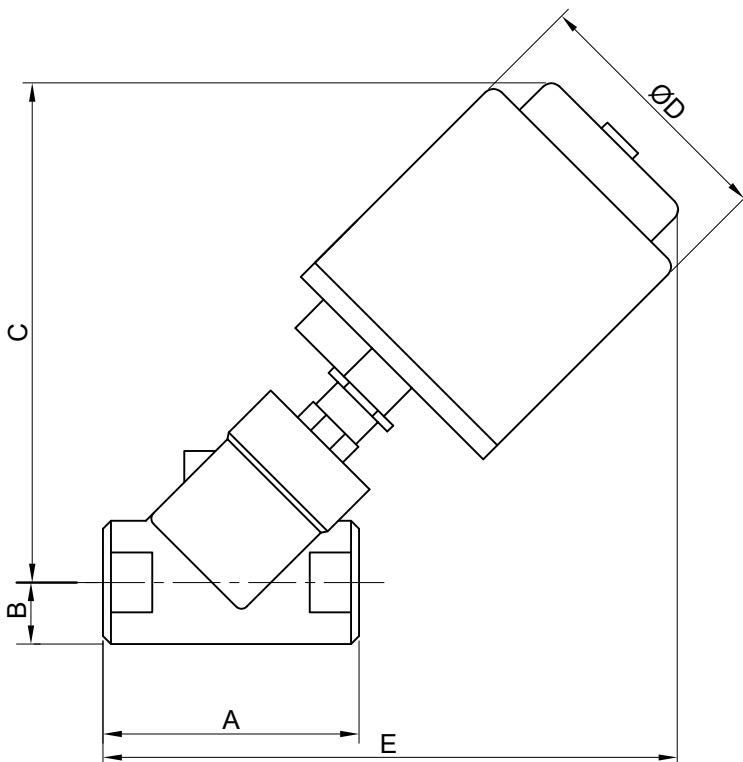
WEIGHT CHART

SIZE(NB)	15	20	25	40	50
WEIGHT	1.30	1.40	1.70	2.60	2.95

SIZE CHART

SIZE(NB)	A	B	C	D	E
15	63.50	16.80	155	103.50	174
20	75	18	160	103.50	180
25	90	21.50	165	103.50	190
40	125	29	180	103.50	216
50	150	35	190	103.50	235

* NOTE.: GENERAL TOLERANCE FOR THE DIMENSIONS ± 3 MM.



* NOTE.: WE RESERVE THE RIGHT TO CHANGE SPECIFICATIONS WITHOUT PRIOR NOTICE FOR THE DEVELOPMENT AND IMPROVEMENT OF THE PRODUCT.

VOLFRAM SYSTEMS INDIA PVT. LTD.

OFFICE ADDRESS : 402, RUTUVIHAR, VARANASI SOCIETY, WARJE, PUNE, 411058
 FACTORY ADDRESS : D II, BLOCK NO. 58&59- 13/14/15, OPP. SPACO CO., SANT
 DYANESHWAR INDUSTRIAL ESTATE, MOHAN NAGAR, MIDC CHINCHWAD, 411019
 Tel.: +91 9309534688 | Email: steam@volfram.in | www.volfram.in

