

# MOISTURE SEPARATOR (MSP-11C)

CAST CARBON STEEL (ASTM A216 Gr. WCB)

CLASS / RATING : #150 & #300 | SIZE : 25 NB TO 100 NB



## DESCRIPTION

The Volfram Moisture Separators are available in cast steel ASTM A216 WCB.

These Moisture Separators are baffle type and used to remove moisture from steam.

## SIZES & CLASS / RATINGS

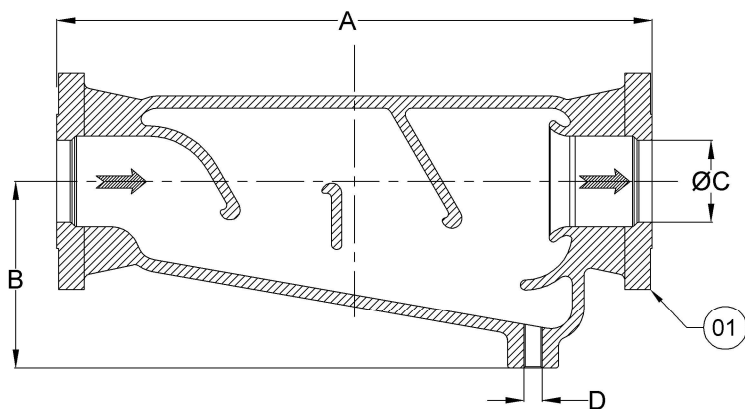
Available Sizes : 25 NB, 40 NB, 50 NB, 65 NB, 80 NB, 100 NB & above sizes available on request.

Available Class : #150 & #300 (ASME B 16.5)  
End Connection : Flanged Ends

CERTIFICATION : These Separators are available with IBR certification (Indian Boiler Regulations).

## FEATURES

- Multi baffle design to remove condensate with high level of efficiency and reliability.
- Typically contoured body design allows large flow areas to ensure low pressure drops.
- Can also be used on compressed air lines for effective removal of moisture contained in the compressed air.
- Available in Cast steel version in flanged connection as per ASME B16.5 # 150 / # 300.



## OPERATING CONDITIONS

Rating	Maximum Operating Pressure	Maximum Operating Temperature
#150	19.9 Kg/cm <sup>2</sup> @ 30°C	425°C @ 5.6 Kg/cm <sup>2</sup>
#300	52.1 Kg/cm <sup>2</sup> @ 30°C	425°C @ 29.3 Kg/cm <sup>2</sup>
Hydro Test Pressure (As Per IBR) :		
#150	29.98 Kg/cm <sup>2</sup> @ 30°C	
#300	78.16 Kg/cm <sup>2</sup> @ 30°C	

\* NOTE : WE RESERVE THE RIGHT TO CHANGE SPECIFICATIONS WITHOUT PRIOR NOTICE FOR THE DEVELOPMENT AND IMPROVEMENT OF THE PRODUCT.



## MOISTURE SEPARATOR (MSP - 11C )

### PART LIST & MATERIALS

Sr.No.	Parts	Material
01	Body	ASTM A216 Gr. WCB

### DIMENSIONS

Size		25 NB	40 NB	50 NB	65 NB	80 NB	100 NB	
Class / Rating	#150	A	300	400	450	450	500	700
		B	100	110	150	170	175	240
		C	25	40	50	65	80	100
		D	15 NB	15 NB	25 NB	25 NB	25 NB	25 NB
	#300	A	300	400	450	450	500	700
		B	100	110	150	170	175	240
		C	25	40	50	65	80	100
		D	15 NB	15 NB	25 NB	25 NB	25 NB	25 NB

All dimensions are in mm.

### APPROX WEIGHT (KG)

Size	25 NB	40 NB	50 NB	65 NB	80 NB	100 NB
#150	9.5	16.0	26.5	33.0	54.2	76.8
#300	10.5	18.6	28.5	36.0	58.6	85.0

### INSTALLATION :

Install in a horizontal pipeline with the drain directly below.

#### NOTE:

To ensure that any separated liquid is drained away quickly, a suitable steam trap module must be connected to the drain connection. For more details contact Volfram Systems.

## VOLFRAM SYSTEMS INDIA PVT. LTD.

OFFICE ADDRESS : 402, RUTUVIHAR, VARANASI SOCIETY, WARJE, PUNE, 411058

FACTORY ADDRESS : D II, BLOCK NO. 58&59- 13/14/15, OPP. SPACO CO., SANT

DYANESHWAR INDUSTRIAL ESTATE, MOHAN NAGAR, MIDC CHINCHWAD, 411019

Tel.: +91 9309534688 | Email: steam@volfram.in | www.volfram.in

