

# 'Y' - TYPE STRAINER (STR-11)

CAST CARBON STEEL (ASTM A216 Gr. WCB)

CLASS / RATING : #150 & #300 | SIZE : 50 NB TO 100 NB



## DESCRIPTION

Volfram Cast Strainers are available in cast steel ASTM A216 Gr. WCB. These Strainers have variety of application for process Industry. Volfram Strainers are provided with most modern design and construction, in accordance with the latest requirement of ASME / IBR standards.

## SIZES & CLASS / RATINGS

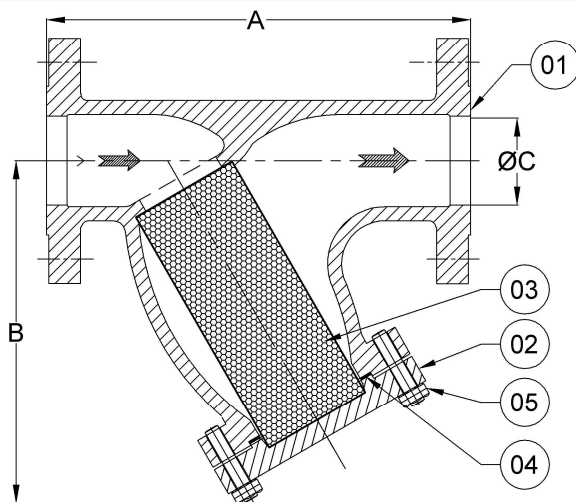
Available Sizes : 50 NB, 65 NB, 80NB, 100 NB & above sizes available on request.

Available Class : #150 & #300 (ASME B 16.5)  
End Connection : Flanged Ends

CERTIFICATION : These Strainers are available with IBR certification (Indian Boiler Regulations).

## FEATURES

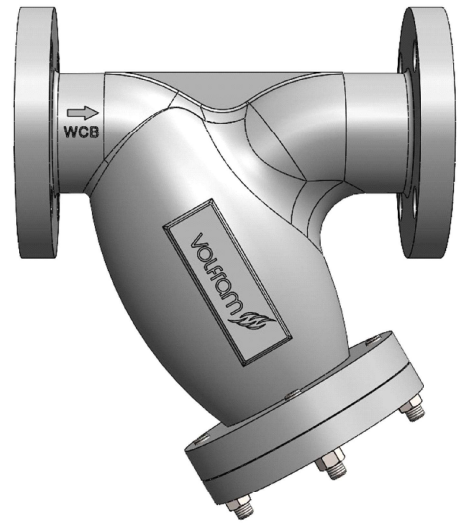
- Minimum pressure drop inside body due to streamlined body design
- Stainless Steel (SS 304) perforated sheet screen is guided in body and cover.
- Screen with different sizes available on request.



## OPERATING CONDITIONS

Rating	Maximum Operating Pressure	Maximum Operating Temperature
#150	19.9 Kg/cm <sup>2</sup> @ 30°C	425°C @ 5.6 Kg/cm <sup>2</sup>
#300	52.1 Kg/cm <sup>2</sup> @ 30°C	425°C @ 29.3 Kg/cm <sup>2</sup>
Hydro Test Pressure (As Per IBR)		
#150	29.98 @ 30°C	
#300	78.16 @ 30°C	

\* NOTE : WE RESERVE THE RIGHT TO CHANGE SPECIFICATIONS WITHOUT PRIOR NOTICE FOR THE DEVELOPMENT AND IMPROVEMENT OF THE PRODUCT.



**'Y' - TYPE STRAINER (STR-11)**

## PART LIST & MATERIALS

Sr.No.	Parts	Materials
01	Body	ASTM A216 Gr. WCB
02	Cover	ASTM A216 Gr. WCB
03	Screen *	SS 304 ( Mesh 40)
04	Gasket *	Non - Asbestos
05	Stud & Nut *	ASTM A 193/194 Gr. B7/2H

NOTE : \* Marked items also available as spares.

## DIMENSIONS

Size (NB)	Size (Inch)	Class / Rating					
		#150			#300		
		A	B	C	A	B	C
50 NB	2"	254	212	50	254	212	50
65 NB	2 1/2"	292	240	65	292	240	65
80 NB	3"	330	276	80	330	276	80
100 NB	4"	381	321	100	381	321	100

All dimensions are in mm.

## APPROX WEIGHT (KG)

Size	50 NB	65 NB	80 NB	100 NB
Weight	19.8	33.5	36.4	55.8

## INSTALLATION :

The arrow on the casting indicates flow direction.

## SERVICING :

Dismantle bolted joint and remove strainer cap to remove muck and clean the screen thoroughly. Fit the screen carefully and fit cap with new gasket. Tighten stud & nuts uniformly.

## VOLFRAM SYSTEMS INDIA PVT. LTD.

OFFICE ADDRESS : 402, RUTUVIHAR, VARANASI SOCIETY, WARJE, PUNE, 411058

FACTORY ADDRESS : D II, BLOCK NO. 58&59- 13/14/15, OPP. SPACO CO., SANT

DYANESHWAR INDUSTRIAL ESTATE, MOHAN NAGAR, MIDC CHINCHWAD, 411019

Tel.: +91 9309534688 | Email: steam@volfram.in | www.volfram.in

